

TRANSPORTATION

Englewood Cliffs' commute time and transportation depend on the destination and traffic conditions. If traveling to New York City, public transportation options include buses, light rail trains, and ferries, with a commute time generally ranging from 30-60 minutes.

Drive



15 min

Line 158 bus



27 min

Line 156 bus



27 min

MAJOR AIRPORTS NEARBY

- 9 miles to Teterboro Airport (TEB / KTEB)
- 14 miles to LaGuardia Airport (LGA / KLGA)
- 22 miles to Newark Liberty International Airport (EWR / KEWR)
- 25 miles to John F. Kennedy International Airport (JFK / KJFK)

Let us help you find your perfect home in Englewood Cliffs.



www.NJForeverHome.com



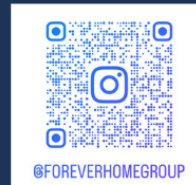
FOREVER HOME

GET IN TOUCH

185 Bridge Plaza N, Fort Lee, NJ
07024 (862) 221-8627

FOLLOW US ON

Instagram
[@ForeverHomeGroup](https://www.instagram.com/ForeverHomeGroup)

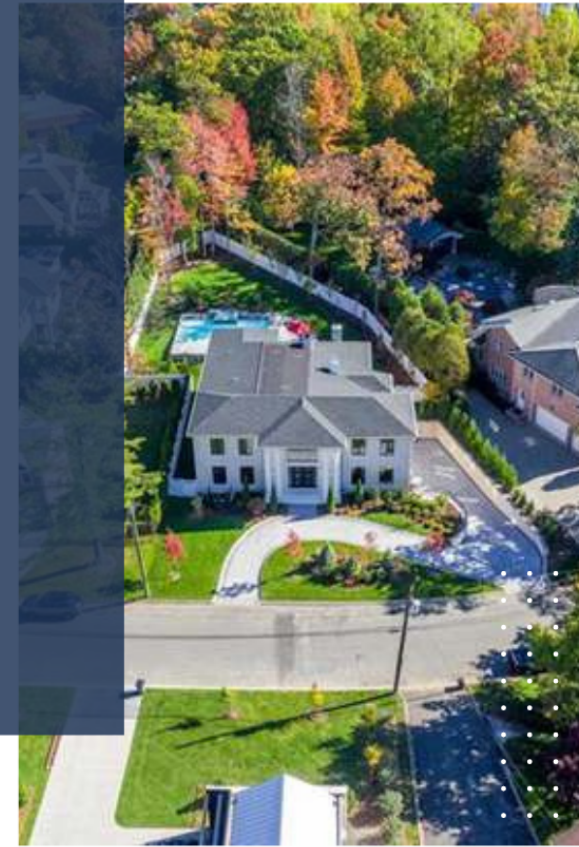


REAL ESTATE INVESTMENT GROUP
Acquisitions | Construction &
Development
Property Management | Leasing &
Sales

ENGLEWOOD CLIFFS NJ

Find your perfect home here.

www.NJForeverHome.com



ENGLEWOOD CLIFFS BERGEN COUNTY, NEW JERSEY

ALL ABOUT ENGLEWOOD CLIFFS

Englewood Cliffs is a suburb of New York City with a population of 5,358. Englewood Cliffs is in Bergen County and is one of the best places to live in New Jersey. Living in Englewood Cliffs offers residents a rural feel and most residents own their homes. In Englewood Cliffs there are a lot of restaurants, coffee shops, and parks. Many retirees live in Englewood Cliffs and residents tend to have moderate political views.

POPULATION & INCOME

- Population: 5,358
- Median Home Value: \$1,159,200

DEMOGRAPHICS

- White: 55.99%
- Asian: 34.98%
- Two or more races: 6.64%
- Black or African American: 1.89%
- Native Hawaiian or Pacific Islander: 0.28%
- Native American: 0.22%
- Other race: 0%



RECREATION/ATTRACTION

- Veterans and Fallen Heroes Park
- Johnson/Witte Field
- Englewood Cliffs Community Center
- Flat Rock Brook Nature Center
- Rockefeller Lookout
- Allison Park



ELEMENTARY SCHOOLS

- North Cliff School (PK, K-2)

INTERMEDIATE SCHOOL

- Englewood Cliffs Upper School (3-8)

PRIVATE SCHOOLS

- The Goddard School of Englewood Cliffs (PK, K)
- Japanese Childrens Society (PK, K-6)